

# In Case of Emergency

## Evacuation Route

### (Basement Parking LG3 and LG4)



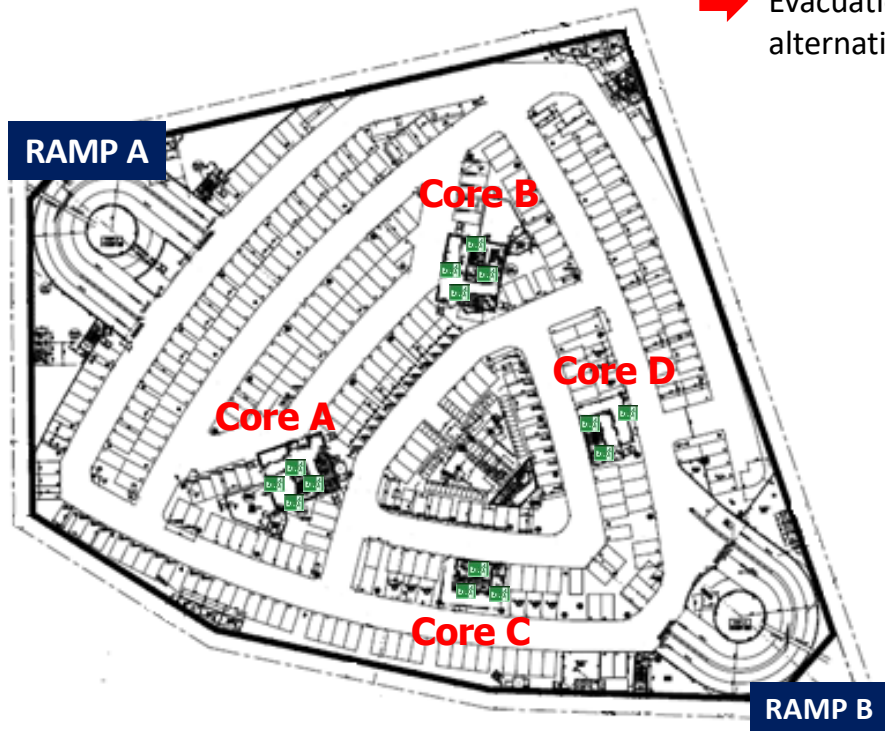
Exit sign



Evacuation route to the nearest emergency exits to Ground Floor



Evacuation route to the alternative emergency exits



#### EVACUATION

- Upon hearing the fire alarm, wait for further instructions before commencing to leave the building.
- Once the instruction is given for evacuation, collect only essential items.
- Do not drive your vehicle out of the building.
- Do not use the lifts. Proceed to the nearest exit to take staircase and make your way up to the Ground Floor exits.
- If the nearest exit is inaccessible, then move to other alternative exits.
- Make your way to the emergency assembly area located at the open carpark of the National Science Centre.

#### ALERT

- If you notice any incident that may threaten yours and your colleagues' well-being, please call the SC Hotline immediately at 03-62048886/8887.
- Remain calm, state your full name and location, describe the emergency, and follow instructions from the SC Hotline.

# In Case of Emergency

## Evacuation Route

### (Lift Lobby, Basement Parking LG3 and LG4)



#### **EVACUATION**

- Upon hearing the fire alarm, wait for further instructions before commencing to leave the building.
- Once the instruction is given for evacuation, collect only essential items.
- Do not drive your vehicle out of the building.
- Do not use the lifts. Please make your way up to the Ground Floor exits.
- Make your way to the emergency assembly area located at the open carpark of the National Science Centre.

#### **ALERT**

- If you notice any incident that may threaten yours and your colleagues' well-being, please call the SC Hotline immediately at 03-62048886/8887.
- Remain calm, state your full name and location, describe the emergency, and follow instructions from the SC Hotline.